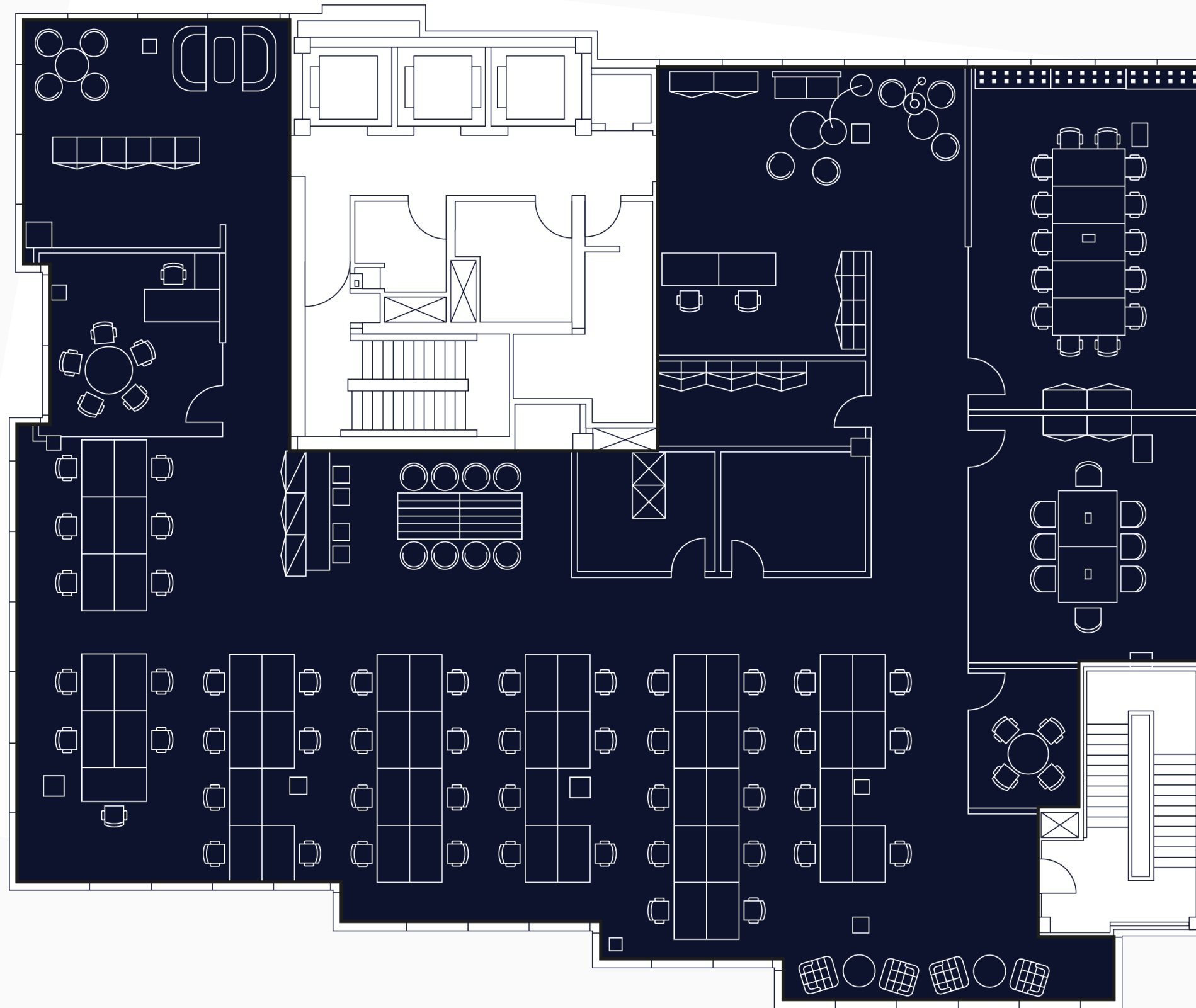


# FLOOR 2

5,616 sq ft

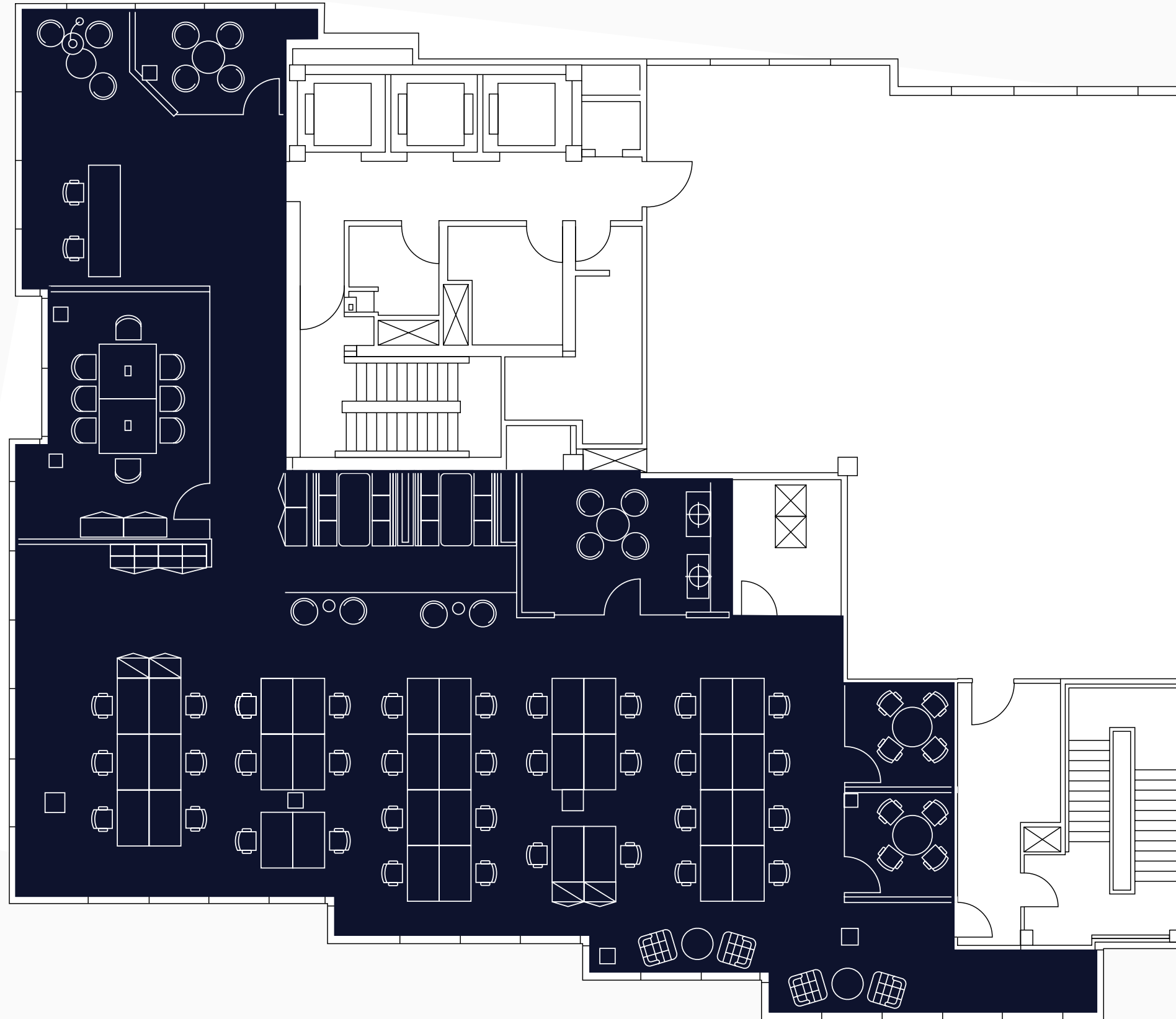
- 50 × Open plan workstations
- 1 × Reception
- 1 × Fourteen person board room
- 1 × Eight person meeting room
- 2 × Four person meeting room
- 1 × Five person meeting room
- 2 × Break out areas
- 1 × Comms room



# FLOOR 4

3,295 sq ft

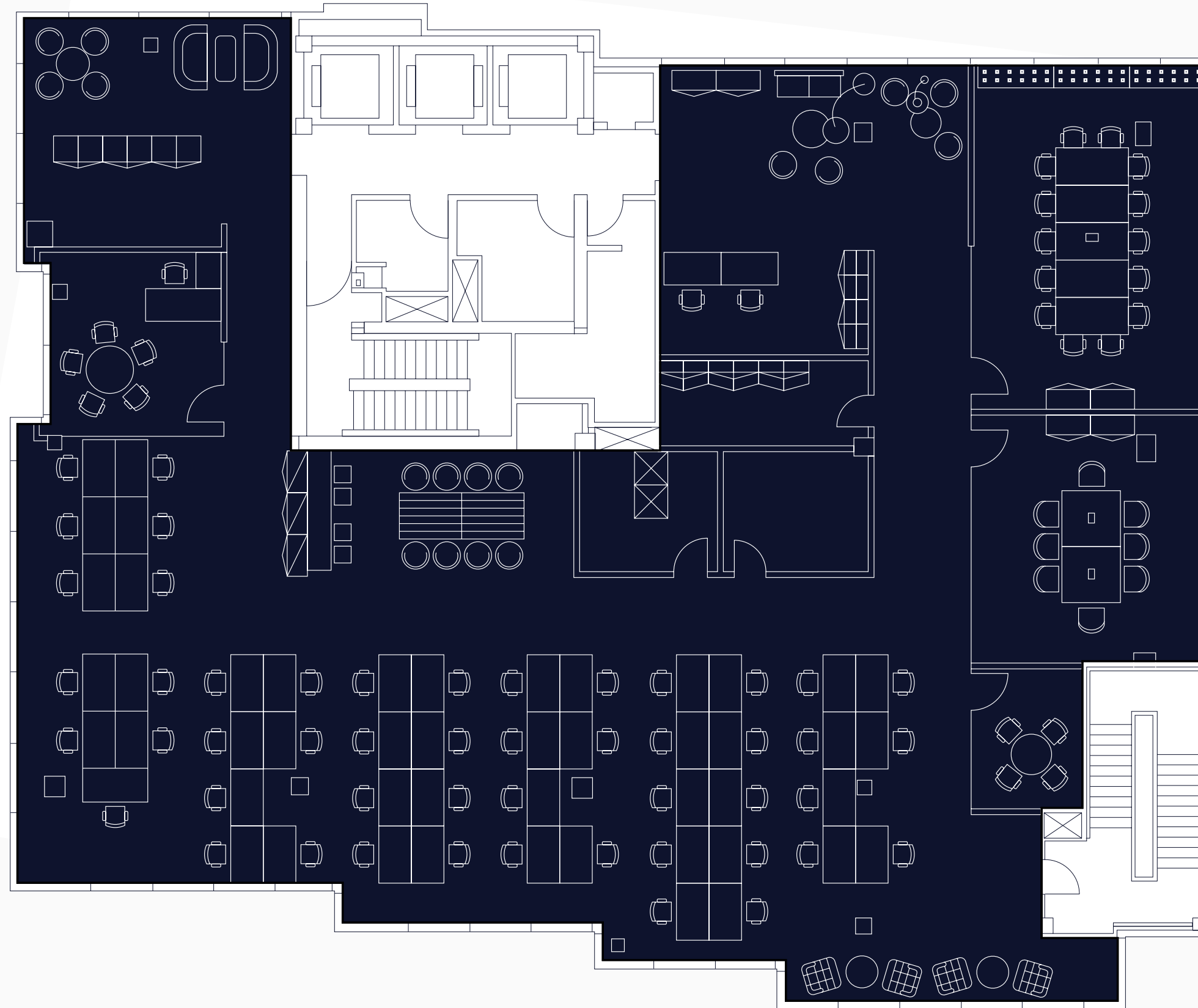
- 34 × Workstations
- 1 × Reception
- 1 × Eight person boardroom
- 2 × Four person meeting rooms
- 1 × Teapoint
- 1 × Comms room



# FLOOR 5

5,880 sq ft

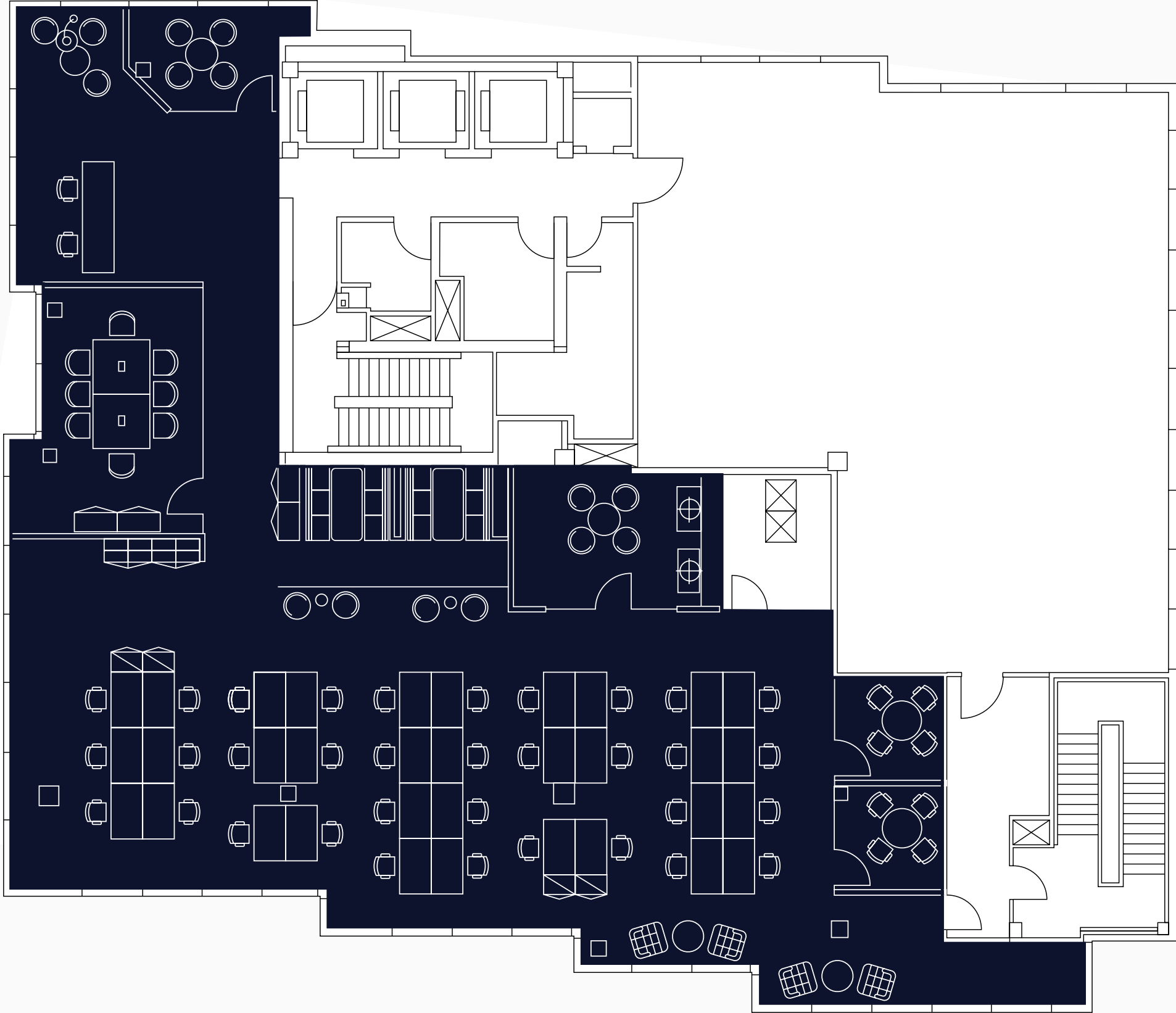
- 50 × Open plan workstations
- 1 × Reception
- 1 × Fourteen person board room
- 1 × Eight person meeting room
- 2 × Four person meeting room
- 1 × Five person meeting room
- 2 × Break out areas
- 1 × Comms room



**FLOOR 6**

3,814 sq ft

- 34 × Workstations
- 1 × Reception
- 1 × Eight person boardroom
- 2 × Four person meeting rooms
- 1 × Teapoint
- 1 × Comms room



# FLOOR 7

1,835 sq ft

- 20 × Open plan workstations
- 01 × Reception
- 01 × Six person boardroom
- 01 × Teapoint
- 01 × Breakout area

